



## Mr Wilson's Weekly Message



This week, I have taken some time to reflect on our relationships with the parents and carers of the pupils in our care. As a Head, I do my best to be open to feedback from all of our stakeholders, including staff, students and, of course, parents. This, to me, is one of the most important things we do as a school, as we will only be able to build a lasting culture of success for our students if home and school are working in unison to do so.

On Monday, we held our first Parent Forum of the year, and it was fantastic to hear the gratitude expressed by those who joined. It was also incredibly valuable to hear your feedback on areas for improvement moving forward.

Next week, we have the first of our two Year 7 "Meet the Tutor" evenings. This will be one of the first opportunities for some of our new Year 7 parents to meet staff and discuss how well their child has settled into life here at The Hurlingham Academy. I am very much looking forward to meeting all parents and hearing how pupils are finding the transition.

Finally, I would like to congratulate Year 11 on completing their first set of mocks. I know the thought of mocks can be daunting, but teachers have been very impressed with how well you applied yourselves throughout this period. Remember, one of the most important parts of any assessment cycle is the feedback you receive afterwards. I encourage all pupils to engage fully with this feedback, as this is where real progress happens.

## THA in the community

A group of Y9 pupils went to Hurlingham Park on Monday morning to help prepare the ground for our Y7 pupils to plant tree saplings on Nov 24th. This morning session involving raking and collecting the leaves, pulling out grass and weeds, collecting any rubbish, and clearing all of the green waste from the areas. This vital piece of work helps to get the ground ready for our Y7 pupils to plant tree saplings on Monday 24th. We are very proud to have supported our local area with the help from a student parent and Idverde landscaping for the third year running.



If you do walk past or through Hurlingham Park, please do go and check how the fenced-off area in Hurlingham Park alongside Broomhouse Lane is looking. We have a number of tree saplings in their 2<sup>nd</sup> year of growth that are now approximately 2ft tall!



## PE Kit– Winter Edition

As winter approaches, I would like to outline expectations for PE kit during these colder periods.

Pupils should wear full PE kit to school, with any additional jackets, fleeces, hats, gloves, scarfs, to ensure that they are suitably protected when travelling to school and during break/lunch times during the school day.

During any extreme cold weather/snow/torrential rain, PE teachers will amend their lessons so that:

1. lessons take place indoors where available
2. pupils are kept moving and more active than normal
3. pupils are encouraged to wear an additional base layer on their upper and/or lower body, this can include extra socks under their PE socks. Base layers can be either blue or black.

As a general reminder regarding PE kit, I would like to remind **all** pupils of the following:

1. the academy sweatshirt is not an appropriate long-sleeved top for PE and must be removed
2. earrings and jewellery are not permitted in PE (please advise that new ear piercings take place at the beginning of the summer holidays, so they do not impact their PE lessons)
3. long hair must be tied back
4. tights cannot be worn in PE, but sports leggings are allowed.

We follow the Association for Physical Education (AfPE) guidance on health and safety, which addresses clothing, footwear, jewellery, hair, and readiness for PE lessons.

For appropriate base layers to be worn in PE, please see examples below with the relevant links.

Please do not hesitate to contact me with any questions.

Mr Pudney (Assistant Principal, Head of Physical Education)



[Sondico | Core Base Long Sleeve Mens | Baselayer Tops | SportsDirect.com](#)



**SITE**

**SITE KUKL LONG SLEEVE BASE LAYER TOP BLACK LARGE 36" CHEST (828RT)**

★★★★★ (10) Ask a Question

Made from super soft, stretchy jersey fabric, designed to move with the user as they work. Close fit provides comfort, and the breathable fabric wicks away sweat to help keep the user dry all day.

[Site Kukul Long Sleeve Base Layer Top Black Large 36" Chest - Screwfix](#)



[Unisex Long-Sleeved Thermal Football Base Layer Top Keepdry - Black KIPSTA | Decathlon](#)



**The Hurlingham Academy**

The best in everyone™

Part of United Learning

## Save the date– winter concert



## Grammar Stream STEM Day

On Wednesday, our Year 10 GCSE Music students took part in an exciting full-day composition and production workshop led by ICMP. ICMP (The Institute of Contemporary Music Performance) is a higher education provider specialising in modern music courses, working with aspiring musicians, composers, and producers. Working alongside industry professionals as well as ICMP undergraduate and postgraduate students, our pupils collaborated brilliantly throughout the day. Students created their own pieces using Logic Pro on our iMacs, supported by the ICMP team. Many even went a step further by recording live vocals and instrumental parts to add to their tracks!



**The Hurlingham Academy**

The best in everyone™

Part of United Learning

## Mr Wilson's Commendations

Congratulations this week go to the following pupils, who made it to the top of our Seneca and Sparx leaderboards.

Top pupils for sparx maths are:

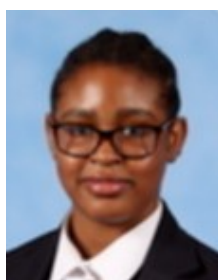
Year 7: Gashbeer

Year 8: Aaliyah

Year 9: Faith

Year 10: Mohammed

Year 11: Orland

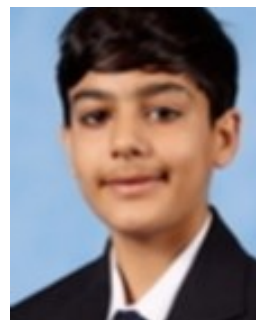
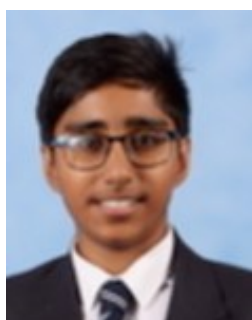
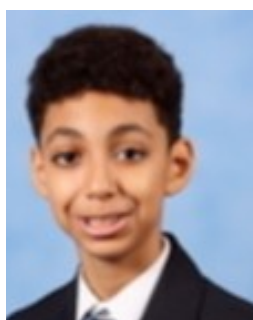


Top pupils for Sparx reader are:

Year 7: Cedar and Dylan

Year 8: Lena and Youness

Year 9: Joresch and Adam



**The Hurlingham Academy**

The best in everyone™

Part of United Learning

## SEND Coffee Morning

### JOIN US AT OUR NEXT SEND COFFEE MORNING



A supportive place to grow, learn and connect together. Join us for an informative session led by our Educational Psychologist, focusing on:

- Understanding Anxiety: How it affects young people, especially during **exam** periods.
- Practical Strategies: Tips to help your child feel confident and prepared for their upcoming exams.
- Q&A Session: Ask questions and share experiences with other parents

We would like to remind all members of our community about our upcoming SEND coffee morning.

Please confirm your attendance using the link below:

[SEND coffee morning- December 2nd 2025 – Fill in form](#)

## Online Homework Completion

A reminder that I1 is open for students every lunchtime as a place for them to be able to work quietly and do their homework if they would like to use this space.

## Key dates for upcoming weeks

Description	Date	Time
Whole School Assembly	Monday 24th November	8:25-9:00
PTA meeting	Tuesday 25th November	17:00-18:00
Year 7 Meet the Tutor Evening	Tuesday 25th and Thursday 27th November	13:45-17:00
<b>Inset day– no school for pupils</b>	Friday 28th November	All day
SEND coffee morning	Tuesday 2nd December	9:30-11:00
Drop down day	Wednesday 3rd December	All day
Year 11 art mock	Thursday 4th December	All day
KS4 Theatre trip	Thursday 4th December	18:30-22:00



**The Hurlingham Academy**

The best in everyone™

Part of United Learning